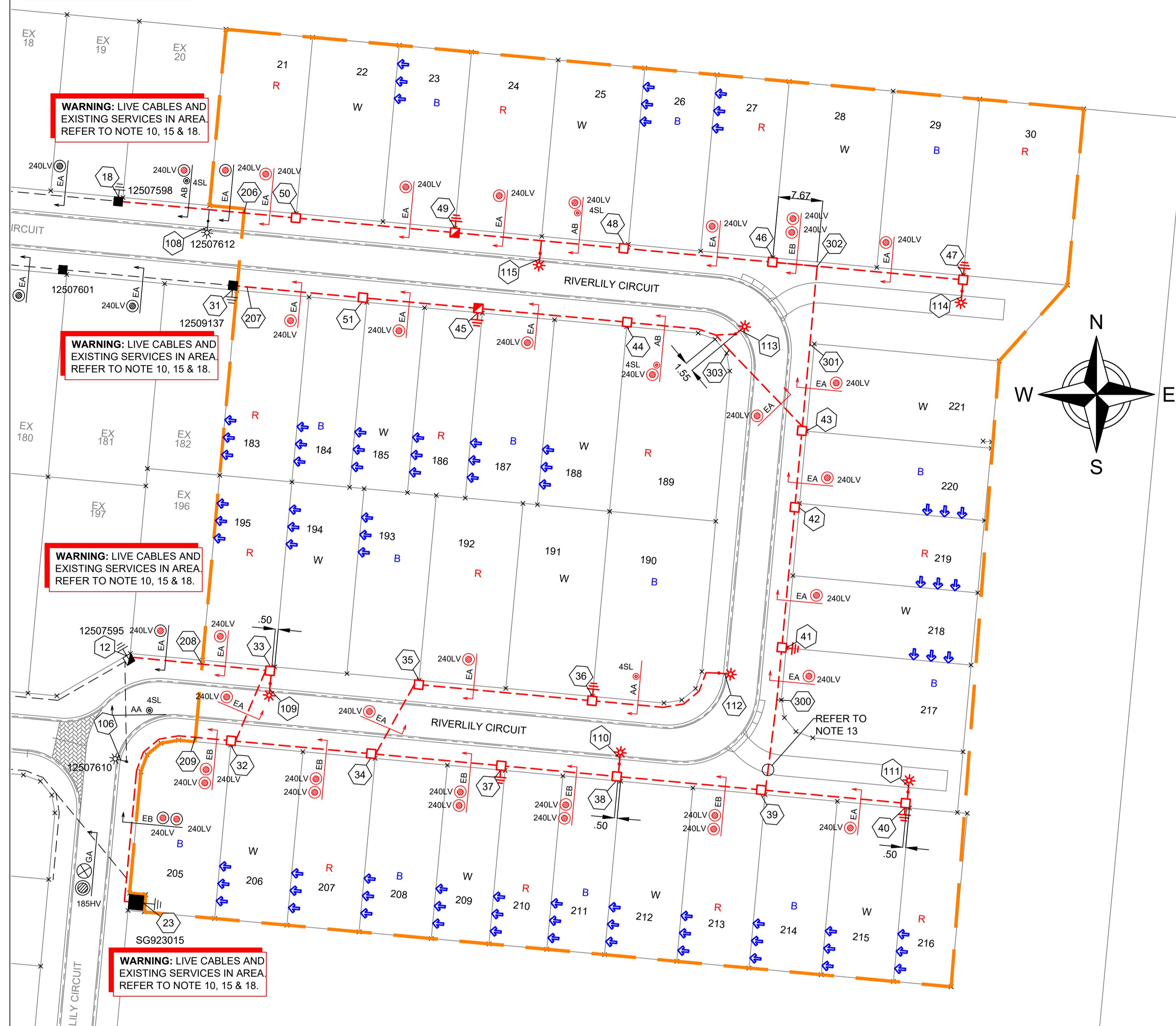
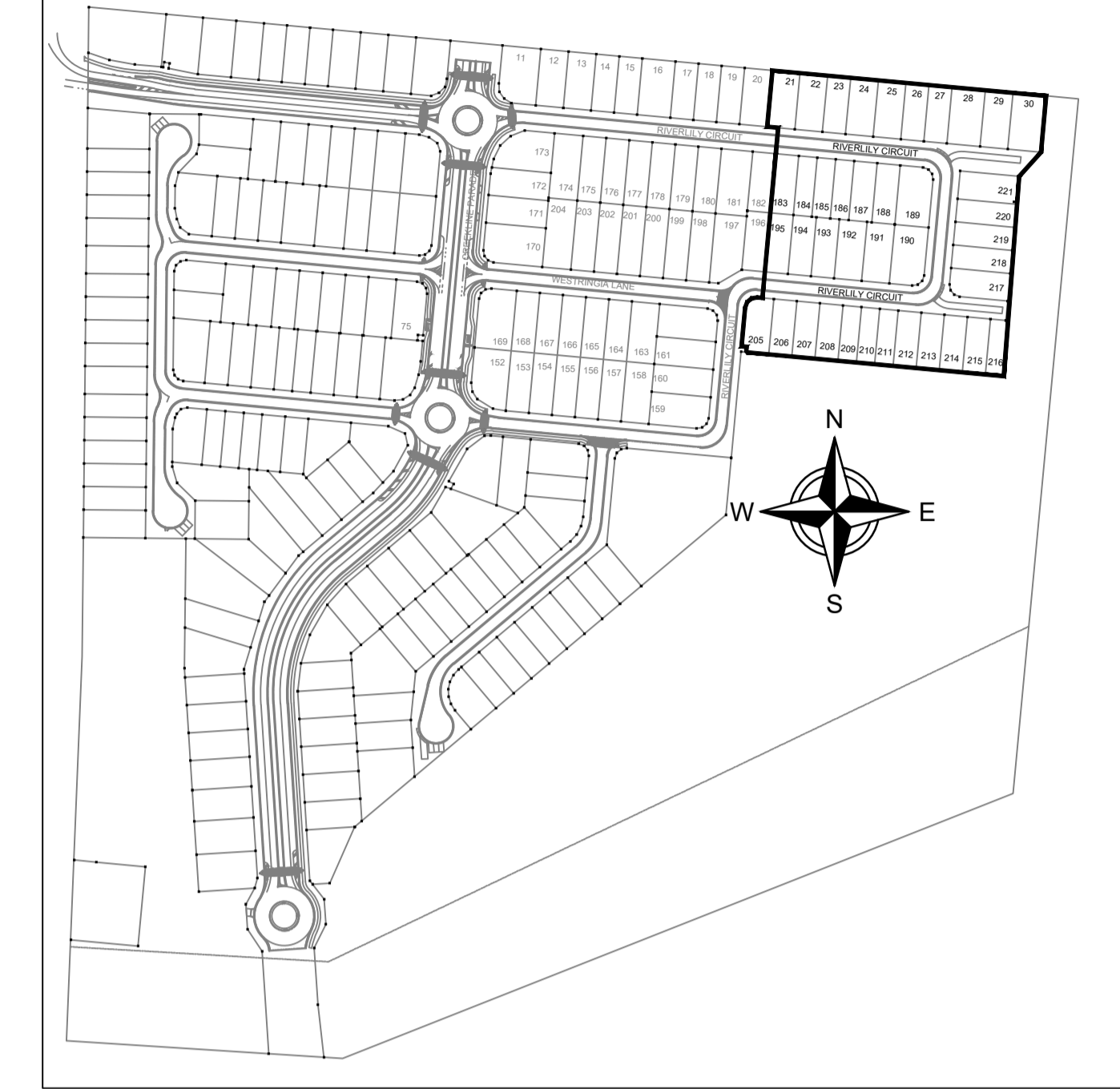


SITE PLAN
1:500 @ A1



WORKPLAN NOTES

- FOR STANDARD UNDERGROUND DUCT SECTIONS REFER TO UNDERGROUND CONSTRUCTION MANUAL DRAWING 5168.
- POLYMERIC COVER TO BE INSTALLED OVER CONDUITS OUTSIDE NORMAL ERGON ALIGNMENT AS PER ERGON DRAWING. 5022-1 AND 5124-1 & 2.
- STANDARD TRENCH ALIGNMENT IS 0.3 TO 0.9 METRES OFF PROPERTY ALIGNMENT SUBJECT TO LOCATION OF OTHER SERVICES. REFER TO UNDERGROUND CONSTRUCTION MANUAL DRAWING 5163 AND DRAWING 5228 FOR TRENCHES WITH NBNC CONDUITS.
- STREETLIGHT POLE FOOTINGS SHALL BE LOCATED PERPENDICULAR TO THE KERB, AT THE PROLONGATION OF THE SIDE PROPERTY BOUNDARY, UNLESS DETAILED OTHERWISE. WHERE DIMENSIONS ARE SHOWN, THEY TAKE PRECEDENCE OVER GRID COORDINATES.
- ALL CONDUITS SHALL BE CONTINUOUS UNLESS DETAILED OTHERWISE.
- FOR STANDARD UDC CONSTRUCTION PRACTICES REFER TO UNDERGROUND CONSTRUCTION MANUAL DRAWINGS 5022, 5085 AND 5124.
- MINOR STREETLIGHTS - THE DEVELOPER SHALL SUPPLY AND INSTALL STREETLIGHT BASES. FOUNDATION DEPTH IS 1200mm FOR MINOR STREETLIGHTS. REFER TO LIGHTING CONSTRUCTION MANUAL DRAWING 1-6-4-1 & 2.
- THE LIGHTING DESIGN INCLUDES AN ALLOWANCE FOR CONSTRUCTION TOLERANCE OF LIGHT POLES SUCH THAT ANY STREETLIGHT CAN BE POSITIONED UP TO A MAXIMUM OF 350mm LONGITUDINALLY FROM THE POSITION SHOWN AND UP TO 100mm MAXIMUM FURTHER AWAY FROM KERB EDGE, INCLUDING POLES WITH GRID COORDINATES, AND STILL MAINTAIN COMPLIANCE.
- CONFIRM ALL CONDUIT AND CABLE LENGTHS PRIOR TO INSTALLATION.
- IN ACCORDANCE WITH ELECTRICAL SAFETY ACT, A SAFETY OBSERVER MUST BE PRESENT AT ALL TIMES WHEN WORKING IN THE VICINITY OF ENERGISED CABLES. CONTACT ERGON ENERGY ON 131046.
- WHERE SHOWN, 35mm sq ANNEALED BARE Cu EARTH SHALL BE INSTALLED AT BOTTOM OF TRENCH IN NATURAL SOIL, BELOW BEDDING SAND, LOCATED A MINIMUM OF 50mm HORIZONTALLY TOWARDS PROPERTY BOUNDARY FROM CONDUITS (HV OR LV) INSTALLED ON PROPERTY BOUNDARY SIDE OF TRENCH. COIL 2m OF CABLE AT SPECIFIED STATIONS IN THE CONDUIT DUCTING SCHEDULE AND ALL REQUIRED JOINTS FOR CONNECTION BY ELECTRICAL CONTRACTOR. THE USE OF THE EARTH ROD CONNECTOR (U-BOLT, IIN. 0719437) IS NOT ACCEPTABLE FOR CONDUCTOR / CABLE TO CONDUCTOR / CABLE CONNECTIONS. IN ADDITION PARALLEL GROOVE CLAMPS ARE NOT ACCEPTABLE FOR JOINTING OR CONNECTING EARTHS BELOW GROUND LEVEL. ACCEPTABLE METHODS SHALL BE EITHER A CRIMP LINK OR A 'C' TYPE COMPRESSION CONNECTOR. CRIMP LINKS AND 'C' TYPE COMPRESSION CONNECTORS ARE AVAILABLE FROM ERGON ENERGY STORES IIN. 0157746 AND IIN. 2406222 RESPECTIVELY.
- ELECTRONIC CABLE MARKERS (ECM'S) ARE TO BE SUPPLIED BY THE ELECTRICAL CONTRACTOR AND ARE REQUIRED AT ENDS OF ALL SPARE CONDUITS AND AT ALL CABLE JOINTS. ECM'S SHALL BE PLACED 150mm ABOVE THE LINE OF CONDUIT FOR CABLE JOINTS AND 150mm ABOVE THE LINE OF CONDUIT FOR SPARE CONDUITS. ECM'S ARE RECOVERABLE AND SHALL BE REMOVED AND RETURNED TO THE ELECTRICAL CONTRACTOR WHEN ALL SPARE CONDUIT ENDS ARE REMOVED FROM A LOCATION.
- WHERE NOTED ON THE DESIGN, ELECTRICAL CONDUITS SHALL BE INSTALLED UNDERNEATH STORMWATER PIPES WHERE CLASHES OCCUR. SEPARATION FROM BOTTOM OF STORMWATER PIPE TO TOP OF ERGON CONDUIT SHALL BE NO LESS THAN 300mm.
- ADDITIONAL CONDUIT BENDS SHALL BE INSTALLED TO ACHIEVE INCREASED BURIAL DEPTH AT ROAD CROSSINGS. REFER TO UNDERGROUND CONSTRUCTION MANUAL DRAWING 5022.
- ALL CONTRACTORS MUST CARRY OUT A DIAL BEFORE YOU DIG ENQUIRY BEFORE COMMENCING ANY EXCAVATION.
- INSTALL PILLAR OFFSET IN ACCORDANCE WITH ERGON DRAWING 5196-2 & DETAIL A.
- CONTRACTOR TO SUPPLY AND INSTALL ENGRAVED LABEL LOCATED ON LIGHTING TERMINAL STATING "LIGHT FED FROM PILLAR ASSET NUMBER _____"
- WARNING: LIVE CABLES AND EXISTING SERVICES IN AREA. CONTRACTOR TO USE POT HOLING, HYDRO-VAC EXCAVATION AND CABLE LOCATION WHEN INSTALLING NEW INFRASTRUCTURE.**



LOCALITY PLAN
N.T.S.

STN NO	SITE LABEL	POLE ALIGNMENT	POLE SETTING DEPTH	ACTION	CONSTRUCTION CLASS	CONSTRUCTION CODE	DRAWING NUMBER	POSITION ON POLE	REMARKS
12	12507595			INSTALL - ERGON	LV CABLE TERMINATION				ERGON ENERGY TO INSTALL LV CABLE TERMINATION FOR CABLE STN 12-33
18	12507598			INSTALL - ERGON	PILLAR UPGRADE	LV PNU1-2/240/N	5074		ERGON ENERGY TO UPGRADE PILLAR TO 2-WAY & TERMINATE CABLE FROM STN 18-50
23	SG923015			INSTALL - ERGON	LV CABLE TERMINATION	LV CT PM11/240	5087		ERGON ENERGY TO INSTALL LV CABLE TERMINATION FOR CABLE STN 23-41.
23	SG923015			INSTALL - ERGON	LV CABLE TERMINATION	LV CT PM11/240	5087		ERGON ENERGY TO INSTALL LV CABLE TERMINATION FOR CABLE STN 23-32.
31	12509137			INSTALL - ERGON	PILLAR UPGRADE	LV PNU1-2/240/N	5074		ERGON ENERGY TO UPGRADE PILLAR TO 2-WAY & TERMINATE CABLE FROM STN 31-51

SPA LIGHTING DESIGN COMPLIANCE CERTIFICATE

THIS LIGHTING DESIGN COMPLIES GENERALLY WITH THE NOMINATED CATEGORIES OF AS1158 FOR RATE 1 AND RATE 2 LUMINAIRES.

NAME: MICHAEL DAYOT TITLE: ENGINEER
RPEQ: 29435

LIGHTING CATEGORIES: CATEGORY PR5
LOCAL COUNCIL: TOWNSVILLE CITY COUNCIL
LUMINAIRE UPCAST: 0 DEGREES UPCAST ANGLE
MAINTENANCE FACTOR: 0.75

THE DESIGN ASSUMES MAINTENANCE FACTORS OF 0.75 FOR MINOR ROAD LIGHTING AND 0.75 FOR MAJOR ROAD LIGHTING. THESE MAINTENANCE FACTORS ARE BASED ON THE FOLLOWING MAINTENANCE SCHEDULE, WHICH MIGHT NOT NECESSARILY BE ADOPTED BY ERGON.

- LAMPS SHALL BE REPLACED AT 36- MONTH INTERVALS.
- ALL THAT TIME, LUMINAIRES SHALL BE CLEANED, INSPECTED AND MAINTAINED.
- VEGETATION SHALL BE KEPT CLEAR OF STREET LIGHTS.
- INSPECTION PATROLS AND SPOT LAMP REPLACEMENT SHALL MAINTAIN SERVICE AVAILABILITY AT NO LESS THAN 95%.
- LUMINAIRES AND LAMPS SHALL BE REPLACED WITH EXACT EQUIVALENTS.

ALL LIGHTING CALCULATIONS ARE AVAILABLE UPON REQUEST.

FOR LIGHTING ARRANGEMENT, SPACINGS, MOUNTING HEIGHTS, OUTREACH DETAILS AND SIGNIFICANT ROAD FEATURES, REFER TO DRAWING.

FOR CONSTRUCTION

ON COMPLETION, MARK UP THIS. PRINT CLEARLY WITH ALL FINAL CHANGES AND RETURN TO PROJECT MANAGER.

CHANGES: YES/NO

ELECTRICAL CONTRACTOR
NAME: _____
SIGNATURE: _____
DATE: _____

CIVIL CONTRACTOR
NAME: _____
SIGNATURE: _____
DATE: _____

Rev Date	14-06-22		
STN NO	13/6/24	FOR CONSTRUCTION	SW
Date		Description	Revised

spa consulting engineers
Simon Perkins & Associates
Tel: (07) 4032 3311 or (07) 4728 3026
PO Box 664 North Cairns QLD 4870
Email Address - admin@spaconsulting.com.au
A business unit of SPA Consulting Engineers (QLD) Pty Ltd. A.B.N. 91 510 844 418

TRENCH SECTIONS-LEGEND

- ⊗ SPARE HV CONDUIT - EXISTING
- ⊗ SPARE HV CONDUIT - PLANNED
- CABLE - PLANNED
- CABLE - EXISTING
- /AB ↓ CONDUITS - EXISTING
- /AB ↑ CONDUITS - PLANNED

LEGEND

- CABLE EXISTING
- CABLE PLANNED
- CABLE RECOVER
- EQUIPMENT EXISTING
- EQUIPMENT RECOVER
- 35mm sq ANNEALED BARE COPPER EARTH
- CABLE EXISTING
- RING MAIN UNIT
- CROSS ROAD PILLAR
- LINKING PILLAR
- LIGHTING PIT
- CABLE JOINT
- SUBSTATION
- N1, N2, N3, CIA1 & CIA2 PILLARS
- DISTRIBUTION CABINET
- STREETLIGHT
- EARTH
- HV POLE
- LV POLE
- POLE MOUNTED TRANSFORMER

Drawing Title	THE RESERVE STAGE 14B UDC UG ELECTRICAL RETICULATION SITE PLAN & ERGON WORKS SCHEDULE		
Date	MAY 2024	Scale	AS SHOWN
Drawn	SW	RPEQ Design Certification	Michael Dayot 29435
Sheet	1 OF 3	ERGON Project Number	1795966
Project Description	THE RESERVE, BOHLE PLAINS.	SPA Drawing Number	3395-E01
Revision	A		